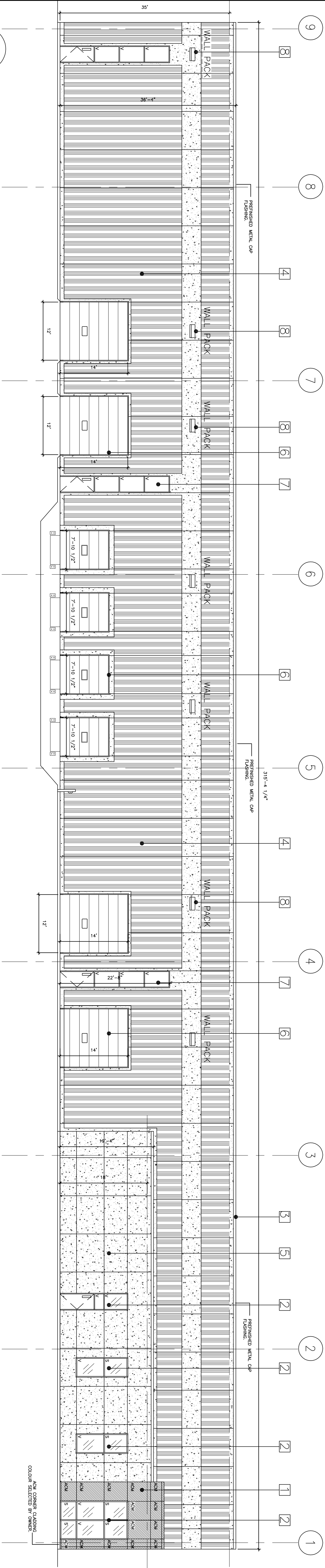


General Notes

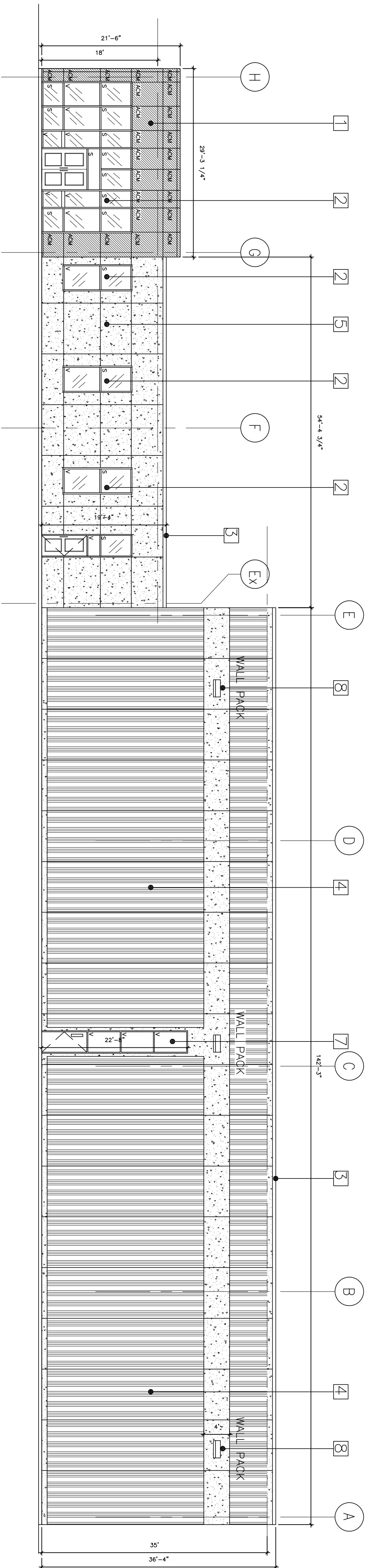
THESE DRAWINGS ARE THE PROPERTY OF
CRD CONSTRUCTION LTD. AND ARE NOT TO
BE COPIED OR REPRODUCED BY ANY METHOD
WITHOUT THE WRITTEN PERMISSION OF
CRD CONSTRUCTION LTD.

Material Legend:

- 1 4mm ACM PANELS IN ALUMINUM
FRAMING (TYPICAL)
- 2 ALUMINUM CURTAIN WALL FRAMING (C/W
BLACK BRASS OPERABLE SHEET METAL PANELS,
SECTION 10-00.00)
- 3 PREFABRICATED METAL C/P FLUSHINGS,
SECTION 10-00.00
- 4 200 CONCRETE RIGID, TYPICAL, AT
ROOF INSULATION VALUE
- 5 ROOF INSULATION VALUE, 2" R-19 POLYSTYRENE
FOAM, COLORED GR WHITE / SEES BR
ROOF INSULATION VALUE
- 6 INSULATED SECTION, Q/H ROOF, SIZES AS
SHOWN, SECTION WHITE
- 7 INSULATED WALL/W/ WITH DOOR AND FRAME
OPERABLE WITH 1" ROOF INSULATION
- 8 LED WALL PANEL, TYPICAL, LOOKING AS SHOWN,
LOCATIONS DETERMINED BY ENGINEER
- 9 INSULATED ROOF PANEL, 200mm CONCRETE
RIGID, COLORED GR WHITE / SEES BR
ROOF INSULATION VALUE



1 EAST ELEVATION
SCALE: 3/32" = 1'-0"



2 NORTH ELEVATION
SCALE: 3/32" = 1'-0"

Woodland Properties
(Guelph) Ltd.

NEW INDUSTRIAL
WAREHOUSE
5070R WHITELAW ROAD
GUELPH, ONTARIO

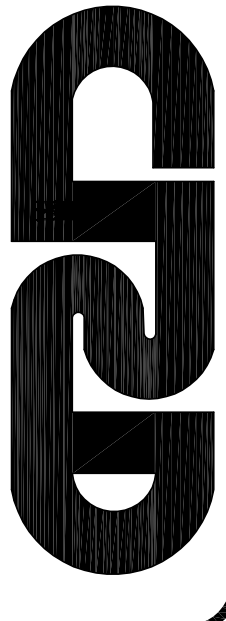
ELEVATIONS

Drn. By Sheet

Date MAY 5 2021

A4.0

Scale 3/32" = 1'-0"



General Notes

THESE DRAWINGS ARE THE PROPERTY OF
CRD CONSTRUCTION LTD. AND ARE NOT TO
BE COPIED OR REPRODUCED BY ANY METHOD
WITHOUT THE WRITTEN PERMISSION OF
CRD CONSTRUCTION LTD.

Material Legend:

- 1 4mm CLIP FASTEN IN ALUMINUM
- 2 ALUMINUM CLIP FASTEN IN ALUMINUM
BY OTHER (SEE METAL CLIP FASTEN, 1A-C)
- 3 ALUMINUM CLIP FASTEN IN METAL
CLIP FASTEN IN METAL CLIP FASTEN
CLIP FASTEN IN METAL CLIP FASTEN
- 4 220 MM CONCRETE REBAR TIE DOWN, BY
220 MM CONCRETE REBAR TIE DOWN, BY
220 MM CONCRETE REBAR TIE DOWN, BY
- 5 220 MM CONCRETE REBAR TIE DOWN, BY
220 MM CONCRETE REBAR TIE DOWN, BY
220 MM CONCRETE REBAR TIE DOWN, BY
- 6 220 MM CONCRETE REBAR TIE DOWN, BY
220 MM CONCRETE REBAR TIE DOWN, BY
220 MM CONCRETE REBAR TIE DOWN, BY
- 7 220 MM CONCRETE REBAR TIE DOWN, BY
220 MM CONCRETE REBAR TIE DOWN, BY
220 MM CONCRETE REBAR TIE DOWN, BY
- 8 220 MM CONCRETE REBAR TIE DOWN, BY
220 MM CONCRETE REBAR TIE DOWN, BY
220 MM CONCRETE REBAR TIE DOWN, BY
- 9 220 MM CONCRETE REBAR TIE DOWN, BY
220 MM CONCRETE REBAR TIE DOWN, BY
220 MM CONCRETE REBAR TIE DOWN, BY

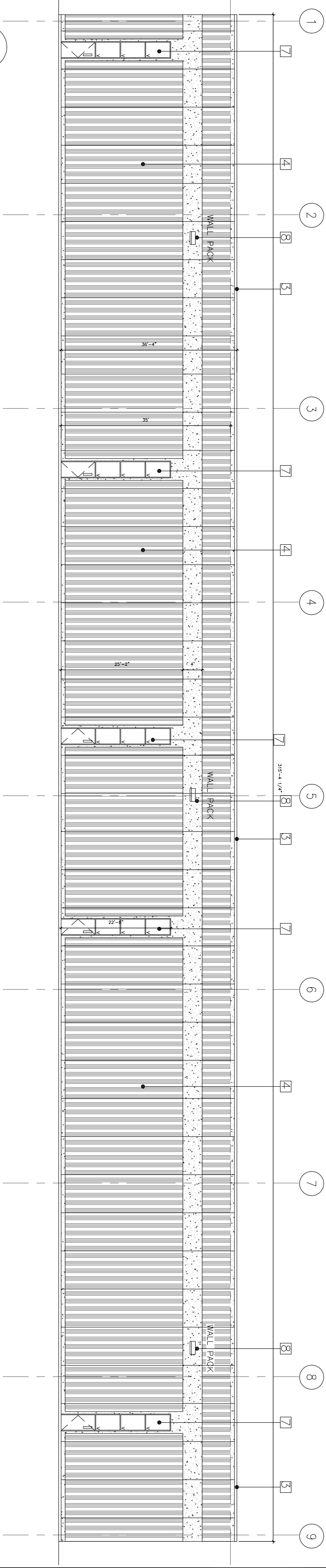
3.	Issued For SPA	24 July 2024
2.	Issued For Review	28 May 2024
1.	Issued For Tender	11 Feb 2021
No.	Revision/Issue	Date

**Woodland Properties
(Guelph) Ltd.**

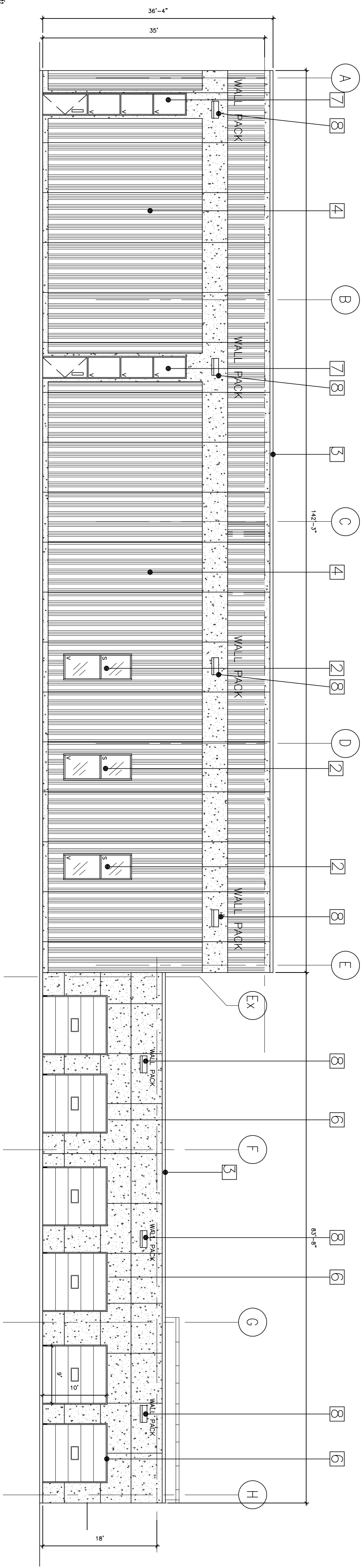
**NEW INDUSTRIAL
WAREHOUSE**
5070R WHITELAW ROAD
GUELPH, ONTARIO

ELEVATIONS

Drn. By	Sheet
Date MAY 5 2021	A4.1
Scale 3/32" = 1'-0"	



1 WEST ELEVATION
SCALE: 3/32" = 1'-0"



2 SOUTH ELEVATION
SCALE: $3/32" = 1'-0"$